

MERCER CLEARLINE 2 Air Gauge Units

Feature both a clear circular scale and large pointer.

- Single measuring channel and bayonet connector for mounting an air plug or air ring.
- Magnification and zero regulators.
- Dial with a 240 mm scale length.
- Double filtration dealing with liquids and solid contaminants along with a check valve.
- Integrated pressure regulator and pressure gauge.



Important

When asking for a quotation or writing down your order, it is important to state your requirements according to the information on page 0-6).

MERCER CLEARLINE 2



µm

µm

in

in

Executions with metric scale

S95010000	A100-23	± 25	1	25 ÷ 0 ÷ 25
S95010001	A100-24	± 50	2	50 ÷ 0 ÷ 50

Executions with metric/inch scale

S95010010	A100-62	± 25	1	25 ÷ 0 ÷ 25	± 0.001	0.0001	10 ÷ 0 ÷ 10
S95010011	A100-63	± 50	2	50 ÷ 0 ÷ 50	± 0.002	0.0002	20 ÷ 0 ÷ 20

Dial Options



A100-23 - 3/A100-23



A100-62 - 3/A100-62



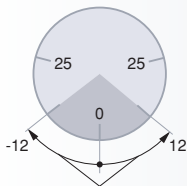
A100-24 - 3/A100-24



A100-63 - 3/A100-63

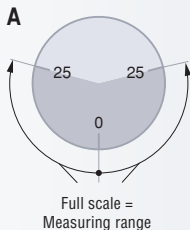
How to use the scales

CLEARLINE 2 and MULTI-WAY CLEARLINE provide different ways of use of the scales, each making allowances for the workpiece as well as the machining process. The sensors are normally made to allow the workpiece related tolerance zone to be equally displayed on half the scale on both plus and minus sides, starting from zero (see below). Four additional ways of use are also illustrated hereafter (A to D).



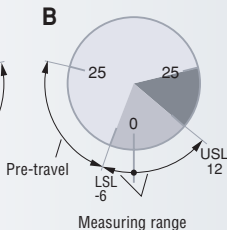
Measuring range

Workpiece related tolerance zone (24 μm) = Measuring range ($\pm 12 \mu\text{m}$).



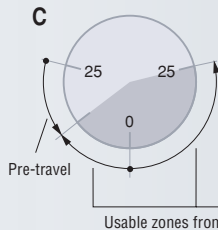
Full scale =
Measuring range

Workpiece related tolerance zone (24 μm) = Measuring range ($\pm 12 \mu\text{m}$).



Measuring range

Use of the measuring range defined within the full scale range based on the workpiece tolerances (LSL and USL).



Usable zones from the measuring range

Use of the half range (Fig. C) or the entire scale (Fig. D) on the minus side for pretravel in order to allow the smaller diameters to be captured during the machining process.

