

MERCER MULTI-WAY CLEARLINE Air Gauge Units

These units are identical to MERCER CLEARLINE 2, but with the following added features:

- 3 single channels and bayonet connectors for up to three sensors (air plugs or air rings).
- Magnification and zero regulators for each channel.
- Lever switch to change over from a channel to another.



Important

When asking for a quotation or writing down your order, it is important to state your requirements according to the information on page O-6).

MERCER MULTI-WAY CLEARLINE



µm

µm

in

in

Executions with metric scale

S95010002 **3/A100-23** ± 25 1 25 ÷ 0 ÷ 25

S95010003 **3/A100-24** ± 50 2 50 ÷ 0 ÷ 50

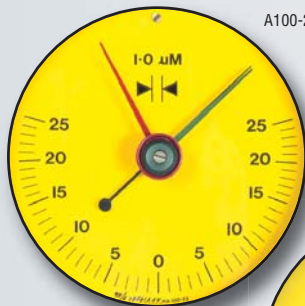
Executions with metric/inch scale

S95010012 **3/A100-62** ± 25 1 25 ÷ 0 ÷ 25 ± 0.001 0.0001 10 ÷ 0 ÷ 10

S95010013 **3/A100-63** ± 50 2 50 ÷ 0 ÷ 50 ± 0.002 0.0002 20 ÷ 0 ÷ 20

Dial Options

A100-23 - 3/A100-23



A100-62 - 3/A100-62



A100-24 - 3/A100-24

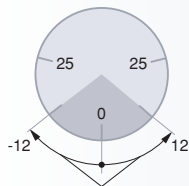


A100-63 - 3/A100-63



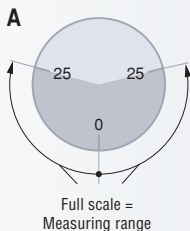
How to use the scales

CLEARLINE 2 and MULTI-WAY CLEARLINE provide different ways of use of the scales, each making allowances for the workpiece as well as the machining process. The sensors are normally made to allow the workpiece related tolerance zone to be equally displayed on half the scale on both plus and minus sides, starting from zero (see below). Four additional ways of use are also illustrated hereafter (A to D).

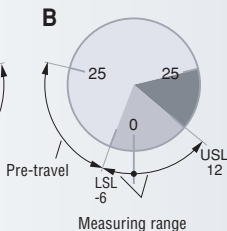


Measuring range

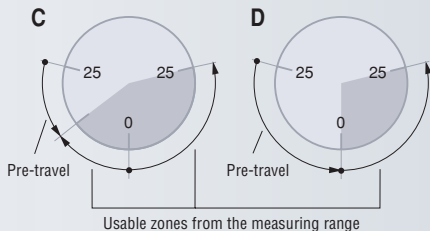
Workpiece related tolerance zone (24 μm) = Measuring range ($\pm 12 \mu\text{m}$).



Workpiece related tolerance zone (24 μm) = Measuring range ($\pm 12 \mu\text{m}$).



Use of the measuring range defined within the full scale based on the workpiece tolerances (LSL and USL).



Use of the half range (Fig. C) or the entire scale (Fig. D) on the minus side for pretravel in order to allow the smaller diameters to be captured during the machining process.